



INTRODUCING
CT SCANNING
TO FIND & CURE

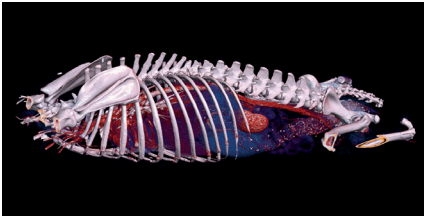
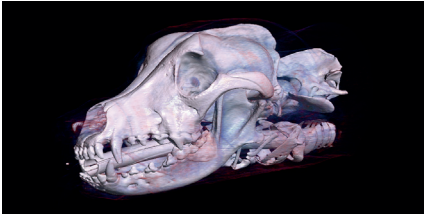


WOLFE
VETS

WOLFE VETS CT SCANNING

Wolfe Vets is excited to announce the opening of our new CT scanning service. We have invested over £400k in our new CT scanner, to find & cure even more of your pets' problems.

CT scanning reaches the parts other tools can't reach, in refreshingly clear detail, so we can diagnose and treat our patients with even greater speed and accuracy.



CT allows us to avoid invasive diagnostic techniques and find problems in regions that are usually very difficult to examine such as the nasal cavity, blood vessels, brain, the spine or the chest, and it also allows us to create 3 dimensional images of bones and joints for precise orthopaedic repairs.

All this means we can get your pets better, faster, with less discomfort and more confidence.

A CT scan uses X-rays to generate a computer reconstruction of the body part in question. It has revolutionised the treatment of sensitive regions such as the thorax and the airways. We can find small issues that cause big problems, like grass seeds stuck in the lungs, before rather than during surgery, and can generate 'surgeon's eye view' studies to plan an operation in fine detail. All of this means the best possible chance of getting pets back on their feet first time.

WOLFE VETS CT SCREENING

As well as using our scanner to help treat and cure sick patients, Wolfe Vets is now offering CT screening programs. Our first program is Elbow Screening: the following breeds are prone to elbow malformation (dysplasia) which benefits from early intervention; CT scanning is the only way to create a genuinely clear picture of the elbow anatomy.

- Springer and Cocker Spaniels
- French Bulldogs
- Labradors & Golden Retrievers
- Rottweilers
- German Shepherd Dogs
- Newfoundlands
- Basset Hounds
- Staffordshire Bull Terriers

To discuss your dog and **elbow screening** please book a consult with James Bennett, RCVS Recognised Advanced Practitioner in Small Animal Surgery.

Of course, we hope that our patients do not need to use our facilities. However, as sickness and injury are part of life, we also want you to know that we have everything at hand to help pets, when they need us to get them better.

With best wishes to everybody and their pets.

JAMES BENNETT

RCVS Recognised Advanced Practitioner in Small Animal Surgery, Owner of Wolfe Vets.



LEADING THE PACK IN PET CARE

548-550 Chiswick High Road
London W4 5RG | 020 8167 4477

OFFERS ONLINE

Follow us [@wolfe.vets](#) [/wolfevets](#)

WOLFEVETS.CO.UK

(P.S. It's my son's name)